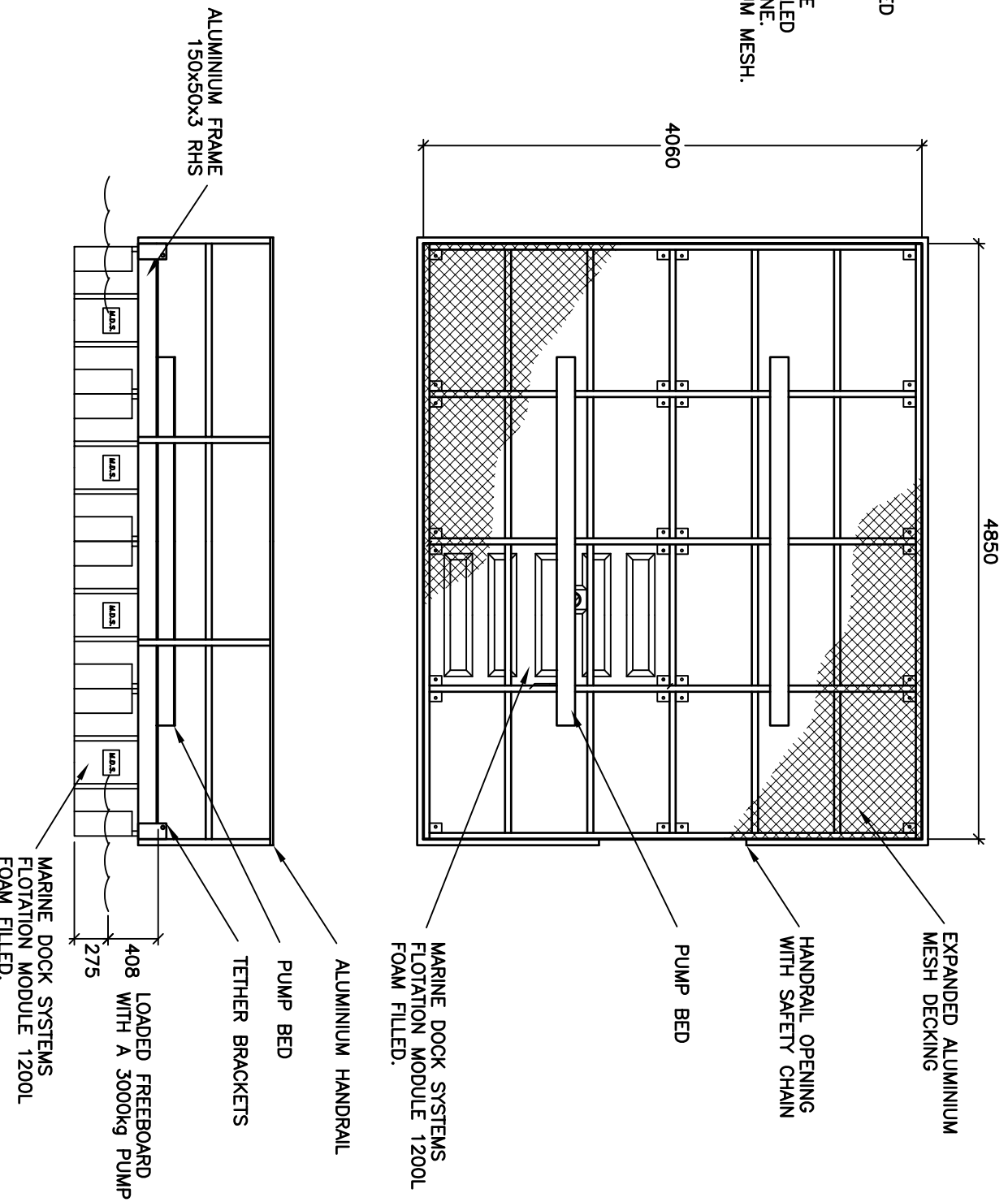


NOTE-ALL STRUCTURE IS FULLY WELDED ALUMINIUM OF GRADE 6063-T5 OR EQUIVALENT.
 -FILLER ALLOY IS GRADE 5356.
 -FLOTATION MODULES ARE MARINE DOCK SYSTEMS 1200L FOAM FILLED WITH CLOSED CELL POLYURETHANE.
 -DECKING IS EXPANDED ALUMINIUM MESH.



PONTOON WEIGHT-1250KG

**MARINE DOCK SYSTEMS
PTY LTD**

4.85m x 4.1m
PUMP PONTOON

PUMP PONTOON



SCALE	N.T.S.	DWG	A4-1763	
DRAWN	BJM	REV	A	1,10,98
DATE	1,10,98	CHK		APP'D