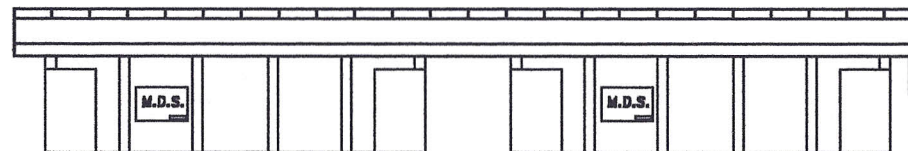


NOTE:

- ALL STRUCTURE IS FULLY WELDED WITH A NOMINAL FILLET OF 5mm
- ALL EXTRUSIONS ARE OF GRADE 6063-T5 OR EQUIVALENT.
- FILLER ALLOY IS GRADE 5356
- ALL TIMBER IS TO BE TREATED WITH A SUITABLE PRESERVATIVE. (CREOSOTE, DECKING PAINT ETC)
- ALL FASTENERS ARE CORROSION RESISTANT STAINLESS STEEL.
- ALL EXPOSED BOLTS ARE TO BE RECESSED INTO THE TIMBER BY COUNTER BORING.
- ALL BOLT THREADS ARE TO BE TREATED WITH ANTI-SIEZE OR EQUIVALENT LUBRICATING COMPOUND, PRIOR TO FASTENING.
- THIS DRAWING IS FOR A PONTOON OF TYPICAL DESIGN. ENGINEERING EVALUATION SHOULD BE PERFORMED FOR THE PONTOONS SUITABILITY FOR EACH PARTICULAR INSTALLATION.



MARINE DOCK SYSTEMS
PTY LTD

3.6m x 2.5m PONTOON
4x650L FLOATS

PONTOON-2911
CUTOUT



SCALE	N.T.S.	DWG	A4-2911	
DRAWN	JPM	REV	A	7,7,99
DATE	7,7,99	CHK		APP'D