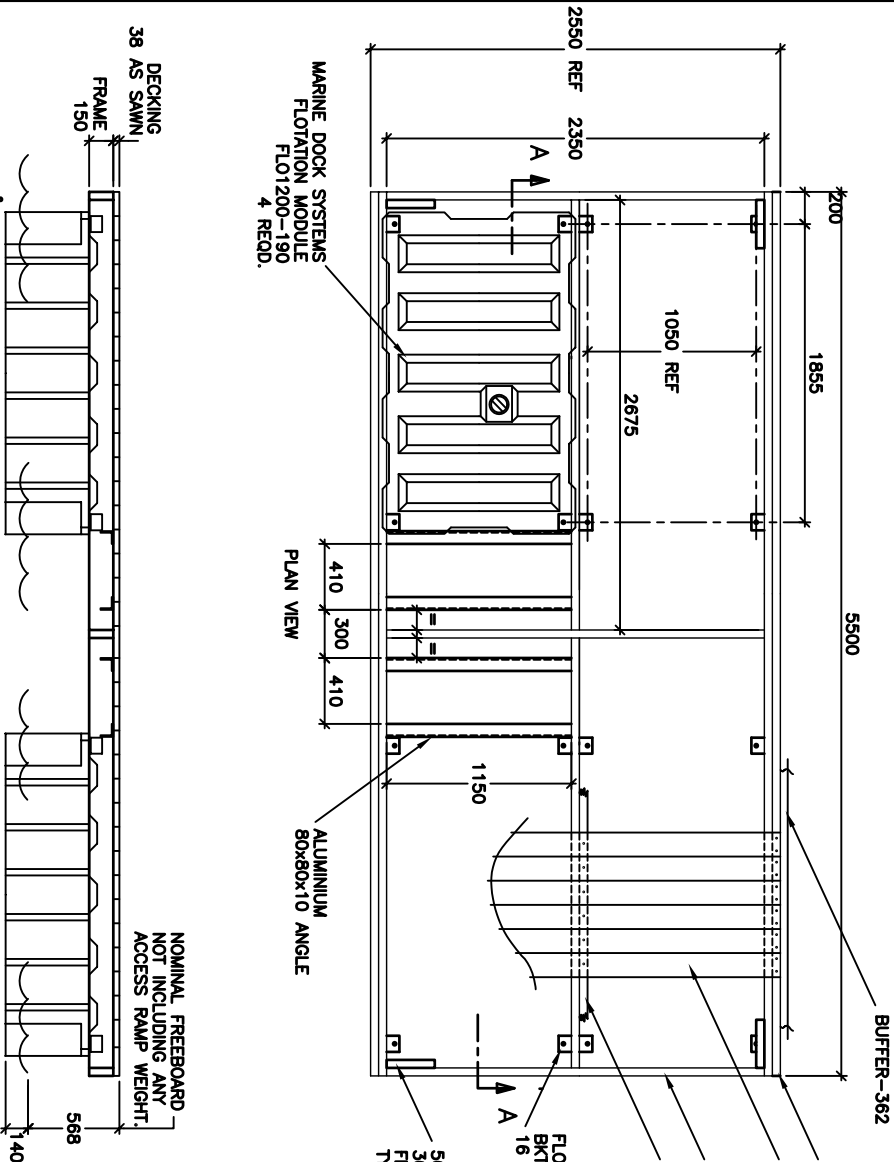


COPYRIGHT ALL RIGHTS RESERVED

DO NOT SCALE



FOR ADDITIONAL ASSEMBLY DETAILS, REFER TO THE FOLLOWING DRAWINGS.
FRAME AND DECK - A4-1503

FASTENERS REQUIRED.

PART No.	ITEM	QTY.	RECD.
370	3/8" BOLTx3"	16	
797	3/8" BOLTx4"	12	
742	3/8" BOLTx4 1/2"	14	
372	1 WASHER	28	
296	1 1/2" WASHER	56	
371	3/8" NYLOC NUT	42	
729	DECK SCREW	195	
731	BUFFER SCREW	36	

NOTE--ALL STRUCTURE IS FULLY WELDED WITH A NOMINAL FILLET OF 5mm
 --ALL EXTRUSIONS ARE OF GRADE 6063-T5, FILLER ALLOY IS 5356
 --ALL TIMBER IS TO BE TREATED WITH A SUITABLE PRESERVATIVE (CREOSOTE, DECKING PAINT, ETC)
 --ALL FASTENERS ARE CORROSION RESISTANT STAINLESS STEEL
 --ALL EXPOSED BOLTS ARE TO BE RECESSED INTO THE TIMBER BY COUNTER BORING.
 --ALL BOLT THREADS ARE TO BE TREATED WITH ANTI-SIZE OR EQUIVALENT LUBRICATING COMPOUND PRIOR TO FASTENING.
 --THIS DRAWING IS FOR A PONTOON OF TYPICAL DESIGN. ENGINEERING EVALUATION SHOULD BE PERFORMED FOR THE PONTOONS SUITABILITY FOR EACH PARTICULAR INSTALLATION.

MARINE DOCK SYSTEMS
 2.5m x 5.5m PONTOON
 4 x 1200L FLOATS
 PONTOON-1850



SCALE	N.T.S.	DWG	A4-1850
DRAWN	BJM	REV	A
DATE	29.1.99	CHK	
		APP'D	