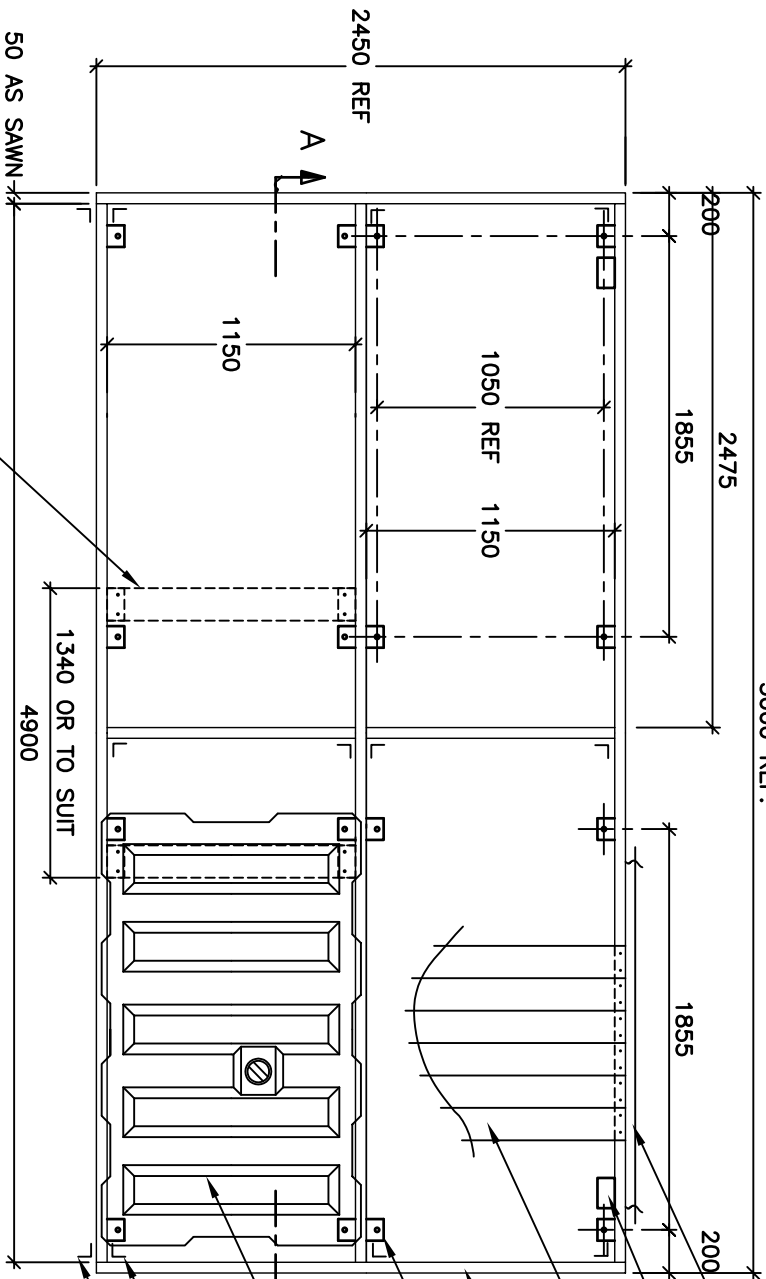


5000 REF.

BUFFER-362 or BUFFER-373

DO NOT SCALE



- CLEAT BRACKET LOCATION TO SUIT
- DECKING HARDWOOD 38x150 F17 min
- FRAME HARDWOOD F17 min. 150x50
- FLOAT BRACKET BKT-FLOAT-289 16 REQD.
- MARINE DOCK SYSTEMS FLOTATION MODULE No. 1200L 4 REQD.
- FRAME BRACKET BKT-FRAME-290 10 REQD.
- CABLE BRACKET BKT-FRAME-290 2 OPTIONAL

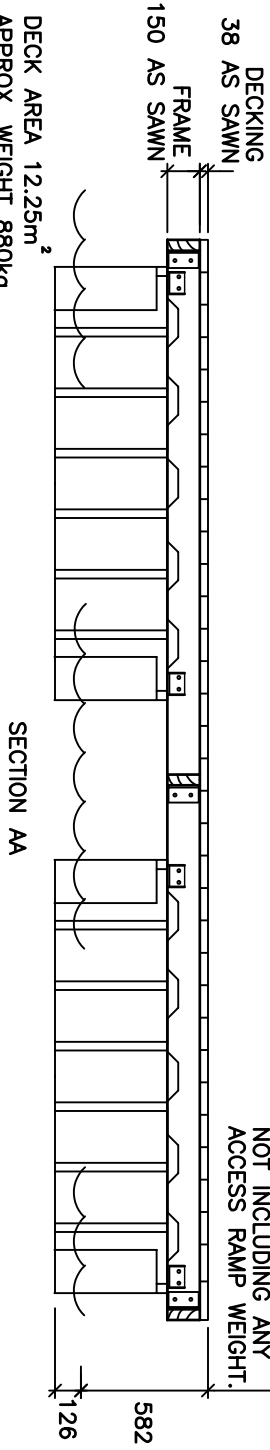
FOR ADDITIONAL ASSEMBLY DETAILS, REFER TO THE FOLLOWING DRAWINGS.

- FRAME BKT - A4-736
- FRAME BKT - A4-826
- FLOAT AND DECK - A4-730
- CLEAT ASSEM - A4-1515
- BUFFER ASSEM - A4-740
- CABLE BKT - A4-839

FASTENERS REQUIRED.		
PART No.	ITEM	QTY. REQD.
#737	3/8" BOLTx3 1/2"	30
#370	3/8" BOLTx3"	52
#372	1" WASHER	132
#296	1 1/2" WASHER	32
#371	3/8" NYLOC NUT	82
#729	DECK SCREW	210
#731	BUFFER SCREW	26

OPTIONAL FRAMING FOR RAMP SUPPORT. 150x50 HW, FLUSH TO THE UNDERSIDE OF DECK

PLAN VIEW



NOMINAL FREEBOARD NOT INCLUDING ANY ACCESS RAMP WEIGHT.

SECTION AA

NOTE-ALL TIMBER IS TO BE TREATED WITH A SUITABLE PRESERVATIVE. (CREOSOTE, DECKING OIL, ETC)

- ALL FASTENERS ARE CORROSION RESISTANT STAINLESS STEEL.
- ALL EXPOSED BOLTS ARE TO BE RECESSED INTO THE TIMBER BY COUNTER BORING.
- ALL BOLT THREADS ARE TO BE TREATED WITH ANTI-SIZE OR EQUIVALENT LUBRICATING COMPOUND PRIOR TO FASTENING.
- THIS DRAWING IS FOR A PONTOON OF TYPICAL DESIGN. ENGINEERING EVALUATION SHOULD BE PERFORMED FOR THE PONTOONS SUITABILITY FOR EACH PARTICULAR INSTALLATION.

DECK AREA 12.25m²
APPROX. WEIGHT 880kg

MARINE DOCK SYSTEMS
PTY LTD

2.5m x 5.0m PONTOON
4 x 1200L FLOATS

PONTOON-856

TOLERANCES	
LINEAR ±5.0	ANGULAR ±1.2°
HOLE CTRS ±1.0	

SCALE	N.T.S.	DRAWING No.	
DRAWN	BJM		A4-856
DATE	15.1.97	REV	D